



P135B: Extended Range

The P135B can operate up to 450m outdoors and differs from the P135A only in the short, protruding, flexible wire aerial. Try to keep this un-coiled to maximise range.

Alert-it Care Systems

P135 Fall and Panic Alarm Badge

Installers Handbook

Support

For technical support please fax or EMail:

HELP: 0845 2179951

FAX : 0845 2179953

Support@itsdesigns.co.uk

Designed by:
ITs Designs Ltd
Leicester
LE9 9FE UK

...using technology to care for carers



One of a range of Alert-it Care Alarms available from:

Quick Reference Sheet: Battery Replacement

Operating Mode

No failsafe heartbeat, no alarms
Using failsafe heartbeat, no alarms
Maximum alarm number ¹

Battery capacity

1 year
1 month
2000 alarms

¹ Based on fall alarms with 2 minute response time from carer

Battery Type: 3v Lithium Coin Cell CR2025 or equivalent
Order Code P160 (5 batteries on storage card)

The battery needs replacing when FAULT 30 or 31 shows on the P137/8 pager or the P155 gives an intermittent audible alarm and activates the alarm output. When no fall has occurred. The P135 will continue to function for some hours (but with a slow flash of the light every 8 seconds), allowing time for this replacement. If the battery is exhausted then the P135 will beep continuously without the light flashing or transmitting.

In non-failsafe mode the battery check is stimulated by making a short press of the PANIC alarm. This must be done daily to test the battery

The Alert-it system has been designed with due regard to reliability and integrity. While it offers a highly vigilant monitoring method, it is always possible that a distress condition can go undetected for a variety of reasons (including malfunction) and in life threatening situations it is advisable to use the Alert-it system in conjunction with additional monitoring techniques (e.g. video). Neither the manufacturer nor its agent can accept any legal responsibility to provide a system that is infallible.

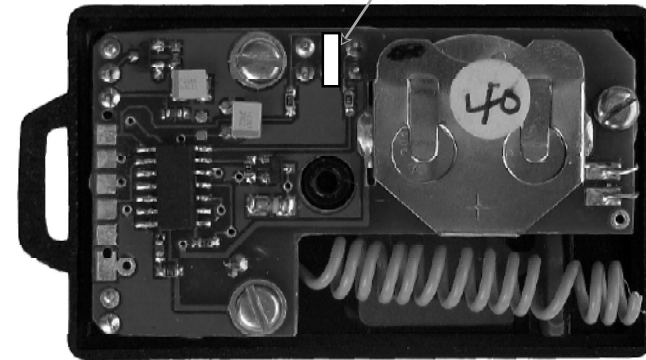
Programming Features

Using the P152 USB Interface (and associated software), every parameter in the P135 can be programmed. This includes:

- Unit Address
- Fall Detection Delay Time
- Pre-warning delay time
- Disable the Panic button
- Auto-reset the Fall Alarm on recovery

For simply changing the system address/type number, then the P135 can be re-addressed directly by the P137 Pager (see P137 Handbook for details), using a link cable available from iTs Designs Ltd.

Link enables "Safelink" operation. If not required then remove for maximum battery life



The battery should be removed before changing the link, and then replaced. The RED PANIC button is then pressed to restart the unit.

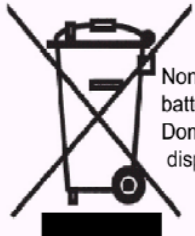
Fig 1: Programming and enabling failsafe operation

Quick Reference Sheet: Battery Replacement

This system is certified to the following European Standards	
93/42/EEC ¹	Class 1 Medical Device
73/23/EEC	Low Voltage Safety
BS EN 61010-1	
89/336/EEC	Radio Interference Immunity
BS EN 50081-1:1992	
BS EN 50082-1:1995	
BS EN 300-220-1	
2002/95/ECRoHS	Permitted Materials

¹Alert-it Care Alarms are social aids designed and manufactured in accordance with 93/42/EEC as Class 1 Medical Devices. They are intended to improve the vigilance of carers to distressing side-effects of various diseases, such as Epilepsy and Dementia. They do not monitor vital physiological processes and should not be expected to diagnose any disease or predict the onset of any symptoms.

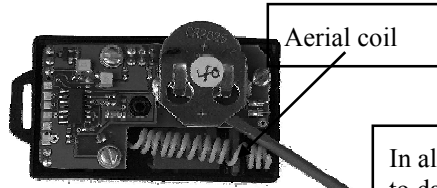
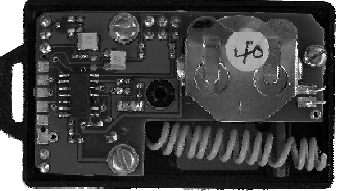
- WARNINGS:**
- The greatest battery life will occur with the Safelink failsafe protocol turned off. This however means there will be no automatic warning of loss of signal or battery status and hence the users must test the geographical area to assure adequate signal coverage and test the alarm reception regularly to prove both range and battery (see page 4: Range Test)
 - The fall alarm detects if the case angle exceeds approximately 60°. This will provide a good level of vigilance, but should the client slump in a part vertical state, or the clothing clip slip, then an alarm may not occur. In life threatening situations additional safety precautions must also be considered.



None of the components, including batteries should be disposed of as Domestic Waste. For information on disposal contact ITs Designs Ltd.



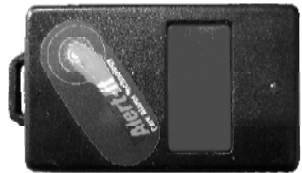
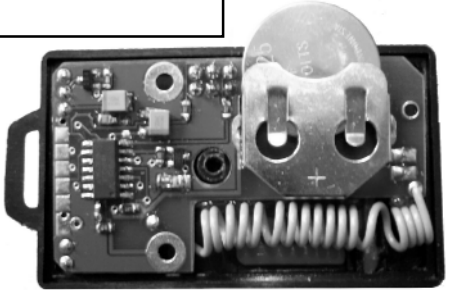
Open the case carefully by pulling apart without twisting, after unscrewing the one rear fixing screw



In all the following procedure be careful not to damage the aerial coil

Use a small screwdriver, match, cocktail stick or similar implement to start the ejection of the battery from its holder. Then pull clear of the housing

Remove and then replace the battery (note the + side is upwards).



Reassemble the case.

The P135 must now be activated by pressing the red button for 1 second until a beep is heard

Quick Reference Sheet: Installation

Battery Installation:

When first supplied the P135 will be non-functional to allow shipment. To activate the unit the Red button is pressed for greater than 1 second (and a beep is heard). The unit is then in full monitoring mode.

The same procedure applies after battery replacement (see page 3)

Range test.

If the unit has the failsafe feature enabled, then the pager will automatically warn if the regular radio transmission is lost. If this is not the case then the panic alarm should be tested in all the usual locations to prove signal reception. A short press (less than 1sec) will cause the P135 to transmit, without setting an alarm

In large installations a more convenient method is to have one P135 with the failsafe capability enabled (see below). This is then positioned where the pager would normally be situated and the pager taken around the whole area to be monitored. Any loss of signal is then apparent when the pager fails to show reception of the failsafe signal.

Wearing the P135:

The unit should be clipped to the user using the rear clothing clip or pin, in a position that best fits the anticipated fall condition. Clipping to the waist band is an excellent place that is unobtrusive and capable of detecting a full fall with few false alarms.

For those prone to slumping while seated then clipping to the upper torso is recommended. This also gives easier access to the panic button.

Failsafe Operation

An internal link selects failsafe mode (see page 7). Remove the link for maximum battery life, but note the warnings on page 6. Add the link to create the highest integrity systems. Temporarily enabling this mode is useful in proving reception

Alarm indication at the pager/receiver

Alarm	Detect Delay	Pre-warn	P135	Pager	P155
Panic	1 second	No	Flash	Assist 01	Intermittent tune + alarm
Fall	15 second	15 second	Flash	Urgent 01	Continuous tune + alarm
TEST	Less than 1 sec	No	Flash	Shows node name	Flash GREEN light
Battery Low	-	-	Flash every 8 sec	Fault 30	Intermittent tune,+ alarm
Battery Fail	-	-	Flash every 8 sec	Fault 31	Intermittent tune,+ alarm
Battery Dead	The P135 beeps every 0.5 sec with no LED and no transmission				